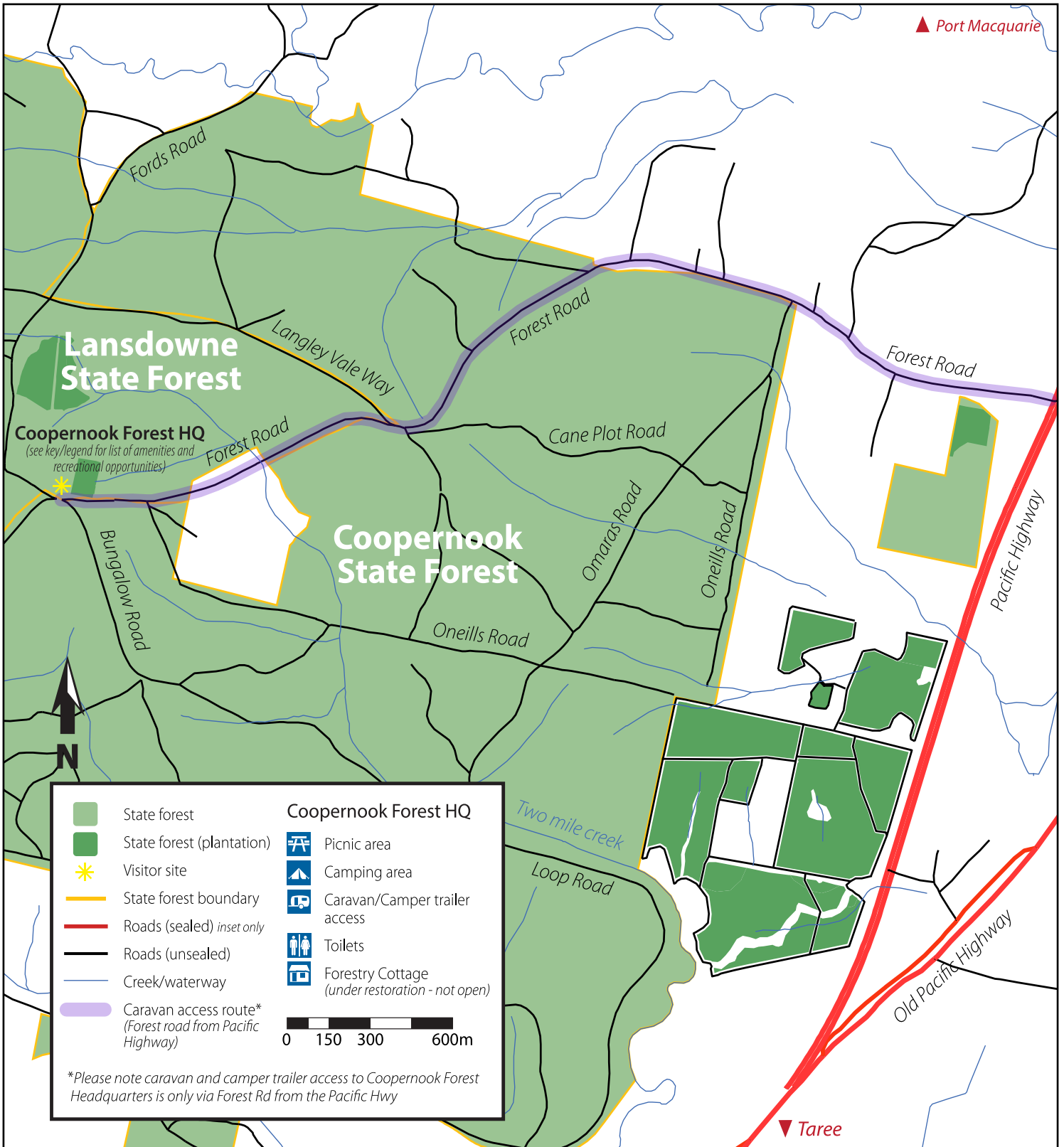


▲ Port Macquarie



▼ Taree

	State forest		Picnic area
	State forest (plantation)		Camping area
	Visitor site		Caravan/Camper trailer access
	State forest boundary		Toilets
	Roads (sealed) inset only		Forestry Cottage (under restoration - not open)
	Roads (unsealed)		
	Creek/waterway		
	Caravan access route* (Forest road from Pacific Highway)		

0 150 300 600m

*Please note caravan and camper trailer access to Coopernook Forest Headquarters is only via Forest Rd from the Pacific Hwy

EXPERIENCE A
FOREST
PLAYGROUND

Coopernook State Forest

www.forestrycorporation.com.au



WARNING – You are visiting a forest which contains many unseen and unpredictable hazards that cannot be removed or controlled. These may be exacerbated during periods of extreme weather – fire, flood, wind and rain. Because of this you are entering the forest at your own risk.

- Other forest hazards include, but are not limited to, overhead hazards from tree limbs and uneven or slippery surfaces.
- Watch out for vehicles and pedestrians.

DISCLAIMER – This map is not guaranteed to be free from error or omission. Therefore, the State of New South Wales, Forestry

Corporation of NSW and its employees disclaim liability for any act done or omission made on the information on the map and any consequences of such acts or omissions.

Forestry Corporation of NSW or its employees are not responsible for any damage caused to your person or property.

Forestry Corporation of NSW aims to make PDF files available to the widest possible audience and endeavours to make files accessible. PDF files are subjected to a full accessibility check in Adobe Acrobat and, where feasible, all identified accessibility issues are resolved. If you are unable to use a PDF file due to an accessibility issue please contact us on 1300 655 687.